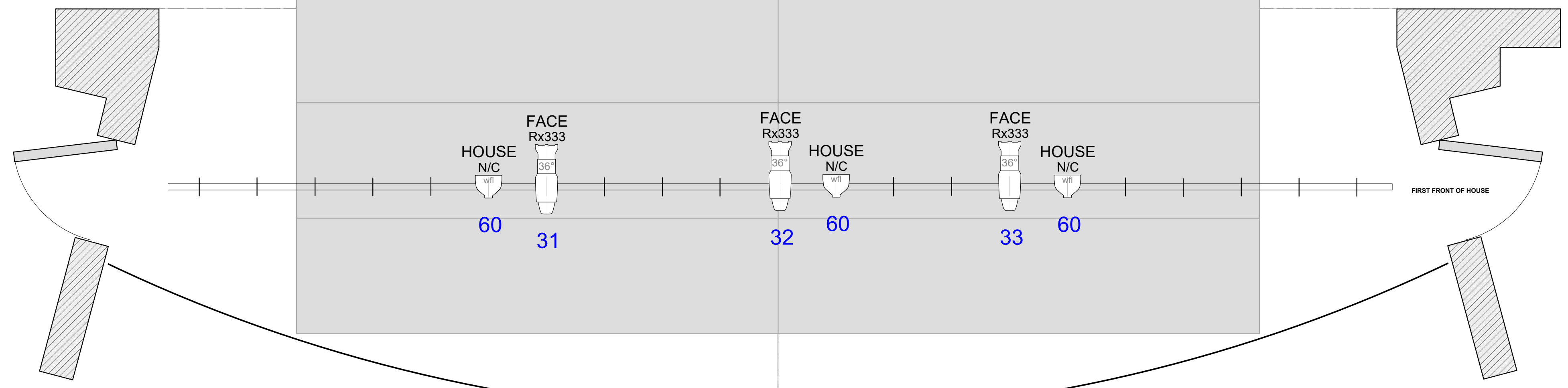
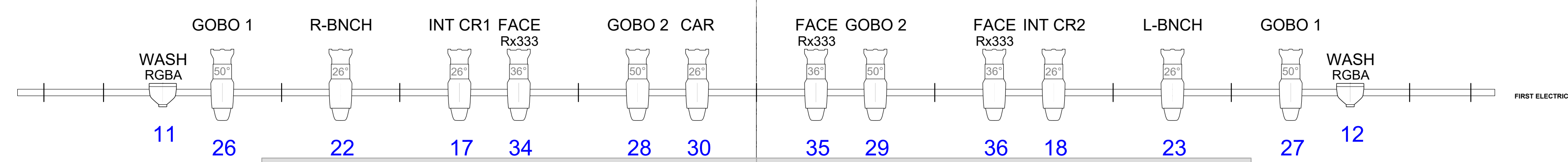
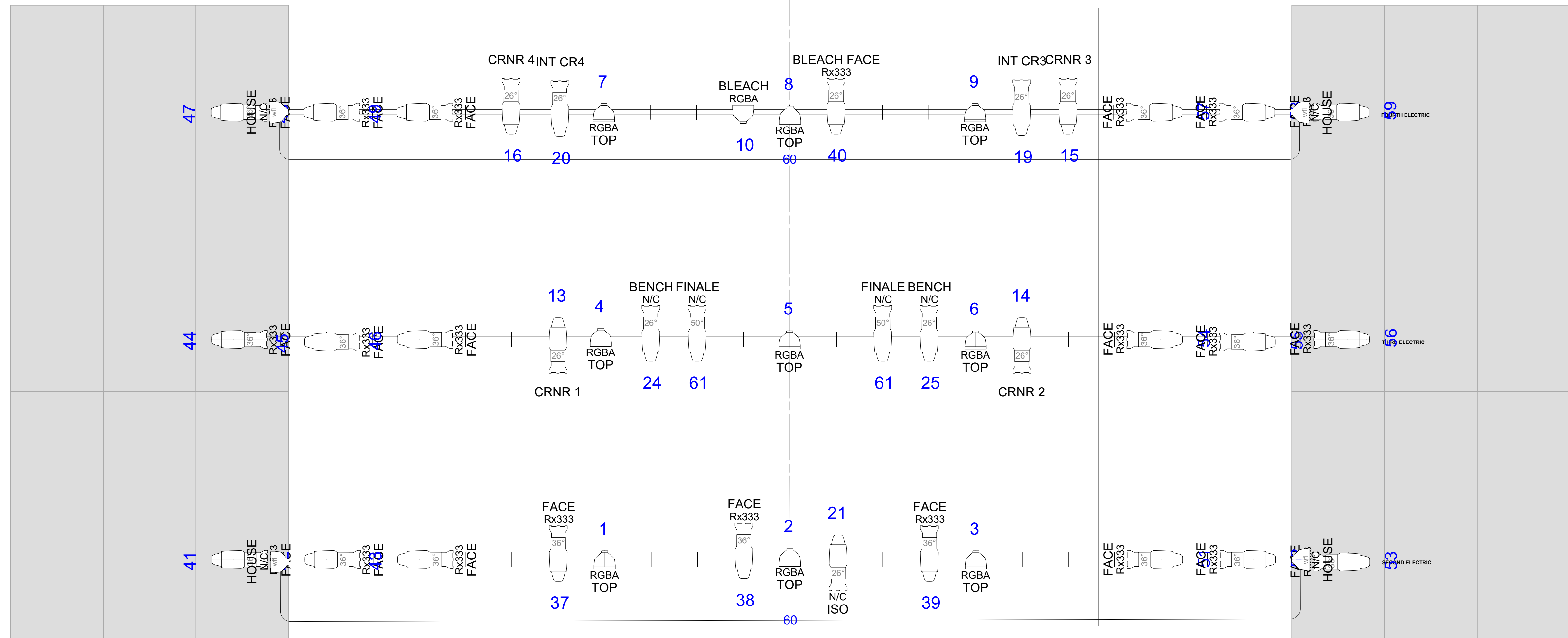
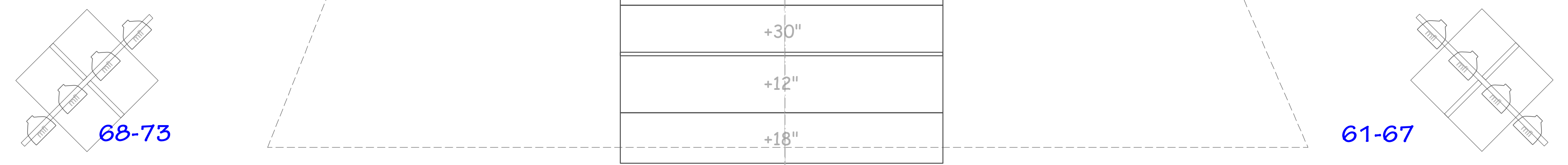
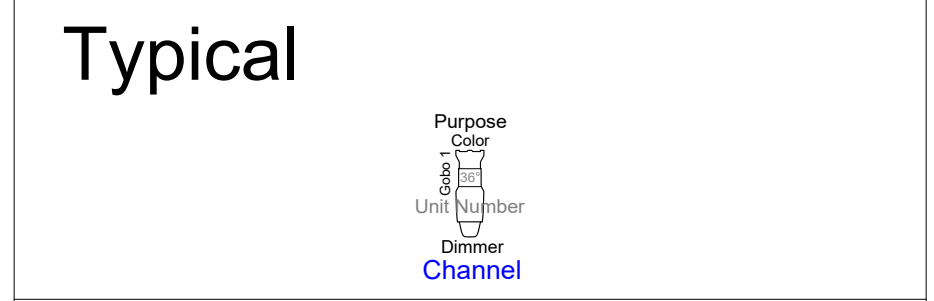


34
33
32
31
30
29
28
27
26
25
24
23
22
21
20
19
18
17
16
15
14
13
12
11
10
9
8
7
6
5
4
3
2
1



- ### Light
- ETC Source 4 26° @ 575w
 - ETC Source-4 36° @ 575w
 - ETC Source-4 50° @ 575w
 - ETC Source 4 PAR MCM (MFL) @ 575w
 - ETC Source 4 PAR MCM (WFL) @ 575w
 - ETC Source 4 PARNel @ 575/750w



Color Summary

Color	Size	Count
N/C	6.25"	2
N/C	6.25	3
N/C	7.5"	7
RGBA	7.5"	12
Rx333	6.25	28

UK DEPARTMENT OF THEATRE & DANCE PRESENTS:	
1	Good Kids Directed by: Tim Hull
	LIGHTING DESIGN: TONY HARDIN & GRACE TRUDEAU
10 FEBRUARY 2017	TECH.DIRECTION: D. WILLIAMS
REV. LIGHTPLOT	SCALE : 1/2" = 1'-0"